

# PAMS

## PROFILE ANALYSIS & MONITORING SYSTEM



Ixom's comprehensive reservoir water quality monitoring system provides continuous whole profile monitoring of up to nine water quality parameters.

**Exclusive PAMS Feature:** All-Level Grab Sampling provides for on demand sampling for laboratory or field analysis of additional raw water quality parameters of interest such as iron, manganese, alkalinity, TOC, hydrogen sulfide, nutrients, etc.

- whole profile
- real time
- predictive data
- early warning
- support intelligent withdrawal
- characterize seasonal limnological variations
- easy access for calibration and maintenance



Extensive real time analysis powered by the OTT HydroMet (HACH) HL7 multiparameter sonde which offers a large sensor suite. Using the sample flow cell, automated continuous profile monitoring is achieved without subjecting the HL7 to the elements.

# PROFILE ANALYSIS & MONITORING SYSTEM



DO

pH

Turbidity

Chlorophyll a

Blue-Green Algae

Temperature

ORP

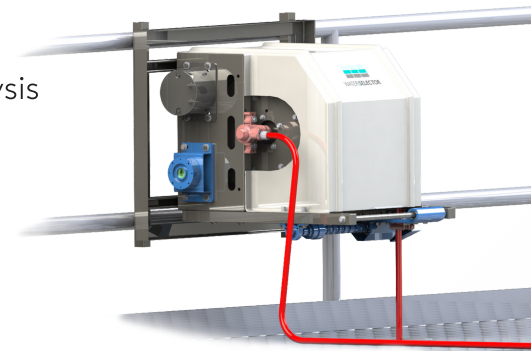
Conductivity

Depth

PAMS incorporates two options for sample point configurations: electric hose reel collection method or multi-point fixed depth method.

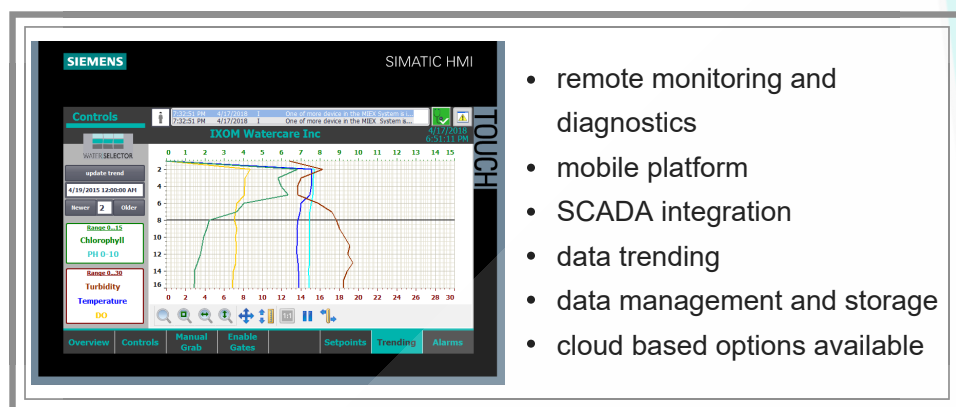
Both designs provide real time continuous multi-parameter analysis covering the entire depth profile.

In additions to continuous automated sample analysis, operators may manually select a specific depth to obtain water quality information or grab sample.



electric hose reel with fixed speed DC drive

## DATA ACQUISITION



Real time trending for withdrawal modelling, treatment plant process control, chemical use optimization, reservoir water quality prediction